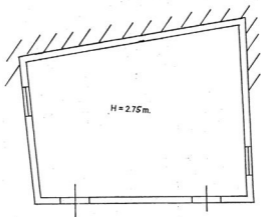




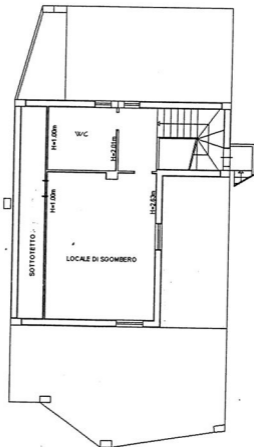
PLANIMETRIA DELLA ZONA

FABBRICATO IN CORSO DI COSTRUZIONE



PIANTA PIANO TERRA

- PORZIONE DI FABBRICATO -

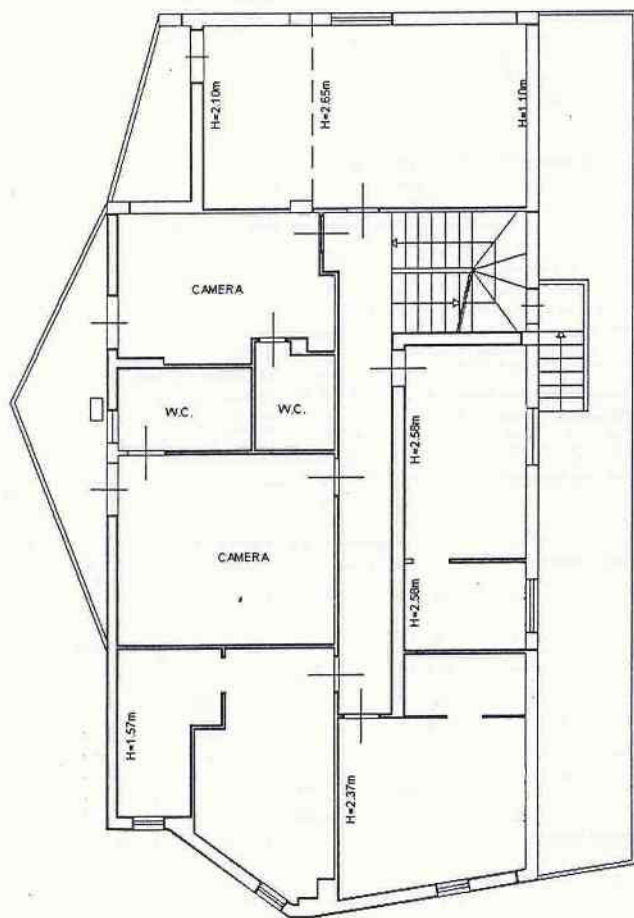


PIANO SOTTOTETTO



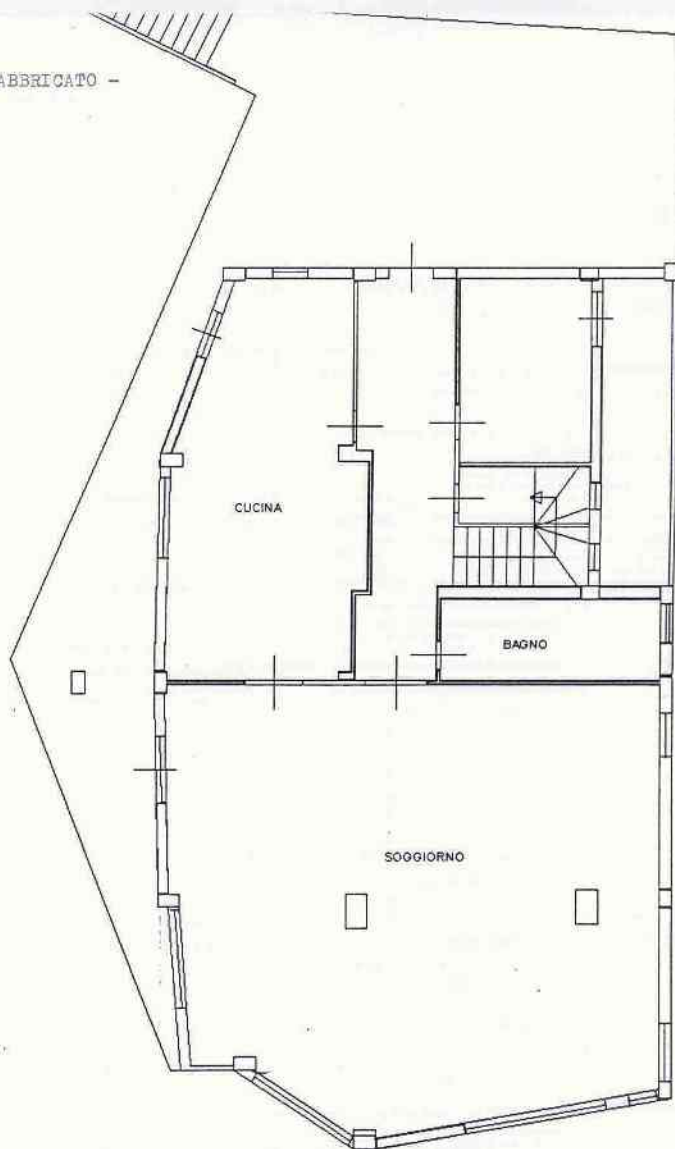
Stralcio catastale rapp.1:2000





PIANO PRIMO

- PORZIONE DI FABBRICATO -



PIANO TERRA H = 2.70 m.